

**UK
MA**

LINE-IT LINEMARKER PAINT

High Performance Line Marking Paint

Technical Data Sheet



BUILDERS COMPLETE RANGE

Description:

A xylene and lead free, high performance, fast drying resin based permanent line marking paint in a range of colours. CFC Free.

Features & Benefits:

- ♦ *Lead and CFC free.*
- ♦ *Quick drying.*
- ♦ *Hard wearing.*
- ♦ *Excellent UV stability.*
- ♦ *Semi-permanent.*

Uses

Suitable for interior and exterior use (e.g. car parks, tennis courts, gymnasias) on wood composites, concrete, tarmacadam, gravel and grass. LINE-IT PAINT is ideal for survey marking and when correctly applied produces a fast drying, hard wearing line. Non-clogging formulation and nozzle.

Preparation

Ensure all surfaces are clean, dry and free from grease or any contaminants that may hinder adhesion.

Application

For best results use in conjunction with a marking applicator.

Shake the can for at least 1 minute after the agitator balls are heard rattling. Shake frequently during use. After use clear the valve ready for storage by spraying in an upright position for 1-2 seconds ensuring the nozzle is pointing AWAY from people and surfaces. Remove nozzle and store vertical. If the can is to be stored for longer than 1 month the can should be stored horizontal.

In windy conditions care must be taken to avoid overspray.

Drying Time

Bond It LINE-IT PAINT is fast drying. Drying times are dependent on the temperature at which it is applied, for best results the temperature should be above +10°C.

Normally LINE-IT PAINT should be touch dry after 30 minutes, however allow to dry for at least 2 hours before subjecting the marking to traffic. Drying times are dependant on temperature and the moisture content of the substrate.

Semi-permanent formulation, lasts approximately up to 3 months after application.

Cleaning

Use Bond It uPVC SOLVENT CLEANER to clean any tools or spillages/ over spray.



Coverage

One 750ml can will yield a line of 60m to 100m (200 to 350ft) of 50mm (2") width, depending on application weight.

Size

750ml aerosol tins.

Colour

Available in 7 colours: yellow, white, red, blue, green, orange and black.

Shelf Life

24 months from date of manufacture when stored in original sealed tins.

Storage Conditions

Store in cool, dry conditions away from heat and out of direct sunlight. Pressurised container: protect from sunlight and do not expose to temperatures exceeding +50°C.

Disposal of Containers

Do not leave empty containers where residue could be harmful to children, animals or the environment. Replace lids and remove any containers to a central disposal point in accordance with local regulations. Do not pierce or burn canister after use.

Spilt material should be mopped up immediately with an absorbent cloth and a suitable solvent cleaner

Health & Safety

Please refer to separate material safety data sheet for full handling, use and storage instructions. Keep out of reach of children. It is the users responsibility to determine suitability for use. If in doubt contact our Technical Department for advice.

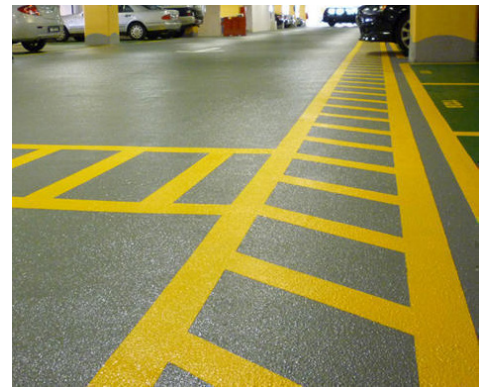
Note: this information is for general guidance only, since site conditions and labour are beyond our control. It is recommended that users make their own tests to determine suitability.

Specification Summary

Physical Form	Opaque viscous liquid
Flash Point	Less than -40°C
Solubility in Water	Immiscible
UN Class	1950 Aerosols, flammable

Product / Order Details

Code	Colour	Size	Barcode
BDLM001	Yellow	750ml	5060021362551
BDLM002	White	750ml	5060021362568
BDLM003	Red	750ml	5060021362575
BDLM004	Blue	750ml	5060021362834
BDLM005	Green	750ml	5060021364142
BDLM006	Orange	750ml	5060021361459
BDLM007	Black	750ml	5060021364166



Part of the Bond It Builders Complete Range

Head Office: Unit G16 River Bank Way, Lowfields Business Park, Elland, West Yorkshire HX5 9DN.

Telephone: +44 (0)1422 315300 **Fax:** +44 (0)1422 315310

Email: salesuk@bonditgroup.com **Website:** www.bonditgroup.com

Note: The data presented in this leaflet is in accordance with the present state of our knowledge, but does not absolve the user from carefully checking all supplies immediately on receipt. We reserve the right to alter product constants within the scope of technical progress or new developments. The recommendations made in this leaflet should be checked by preliminary trials because of conditions during processing over which we have no control, especially where other companies raw materials are also being used. The recommendations do not absolve the user from the obligation of investigating the possibility of infringement of third parties rights and, if necessary clarifying the position. Recommendations for use do not constitute a warranty, either expressed or implied, of the fitness or suitability of the products for a particular purpose.



Version 7: 26/01/23
Supersedes V6 13/10/22

bond it