

## RTV-C | Castellated Roof Tile Vent

Profiled roof tile vent to enable ventilation directly into a roof space or connect to a ducted ventilation system

### Uses

- On roofs with Castellated profile roof tiles
- Enables ventilation directly into a roof space
- Can also be connected to a ducted ventilation system inside the building

### Features and Benefits

- Suitable for roofs with a minimum pitch of 20°
- Free ventilation area of 10,000mm<sup>2</sup>
- Sized to replace one Castellated tile to provide a continuous visual appearance along the roof when viewed at all levels
- Shaped to manage and channel rainwater back down onto the roof tiles and away from the vent opening
- 4mm spaced external grille to prevent rainwater ingress and keep out large insects, vermin and debris
- Integrated clips to ensure a secure fit to surrounding roof tiles
- UV stabilised top for continuous exposure to sunlight
- Lightweight and easy to handle

### Relevant Standards

- BS EN 490:2011 Concrete roofing tiles and fittings for roof covering and wall cladding - product specifications (+A1:2017)
- BS 5250: 2021 Management of moisture in buildings – Code of practice
- BS 5534:2014 Slating and tiling for pitched roofs and vertical cladding – code of practice (+A2:2018)
- Manufactured to BS EN ISO 9001:2015 and BS EN ISO 14001:2015
- Complies with all relevant sections of the Building Regulations 2010
- Satisfies all relevant NHBC requirements

### Compatibility

Castellated large format tiles from all major manufacturers including:

- Marley Ludlow Major
- Redland Renown
- Sandtoft Lindum
- Russel Cheviot
- Lagan Square Top

### Product Codes

Product Description	Colour	Weight	Box Quantity	Product Code	Pack Quantity	Pack Code	Pallet Quantity
Castellated Roof Tile Vent	Terracotta	0.87kg	1	RTV-CTE	8	RTVMULTI-CTE	136
Castellated Roof Tile Vent	Brown	0.87kg	1	RTV-CBR	8	RTVMULTI-CBR	136
Castellated Roof Tile Vent	Grey	0.87kg	1	RTV-CGR	8	RTVMULTI-CGR	136
Castellated Roof Tile Vent	Red	0.87kg	1	RTV-CRD	8	RTVMULTI-CRD	136

### Accessories

- The 110mm Flexi-Pipe (RTV-KIT1) can be used to aid connection to ventilation duct or soil vent pipe
- The standard adapter (RTV-ADS) can be used to attach the roof tile vent to 110mm ductwork
- Can be connected to 100/110/125/150mm duct sizes when combined with the multi adapter (RTV-ADMULTI)
- RTV-ADS and RTV-KIT1 available as one kit (RTV-KIT2). See 110mm Flexi-Pipe Kits datasheet



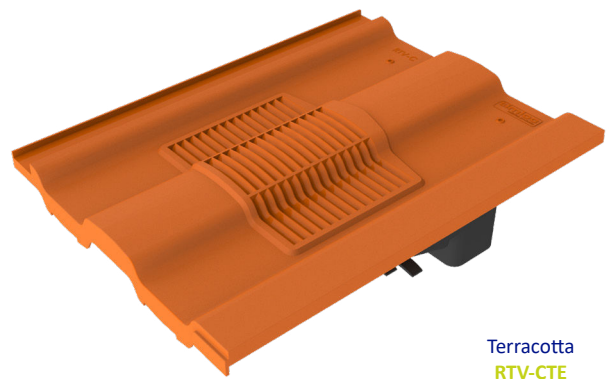
Standard Adapter **RTV-ADS**



Multi Adapter **RTV-ADMULTI**



110mm Flexi-Pipe **RTV-KIT1**



Terracotta  
**RTV-CTE**



Brown  
**RTV-CBR**



Grey  
**RTV-CGR**

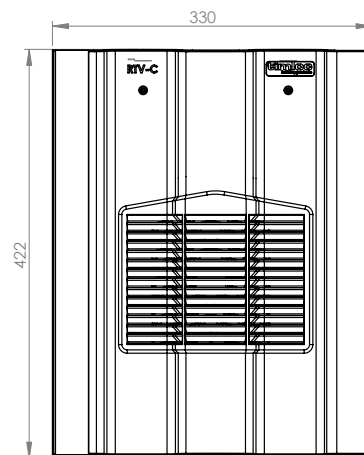


Red  
**RTV-CRD**

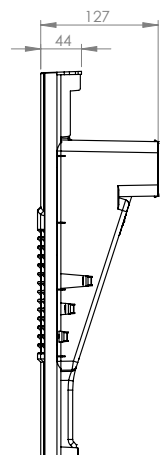
### Material and Colour Choice

- Top - UV stabilised coloured injection moulded Polypropylene with textured finish
- Available in Terracotta, Brown, Grey and Red
- Base – Black injection moulded Polypropylene

### Product Dimensions



Top Profile



Side Profile

**NB.** RTV-C available in single, pack or pallet quantities. For pack quantities, 8 tile vent assemblies are packaged in one large box.